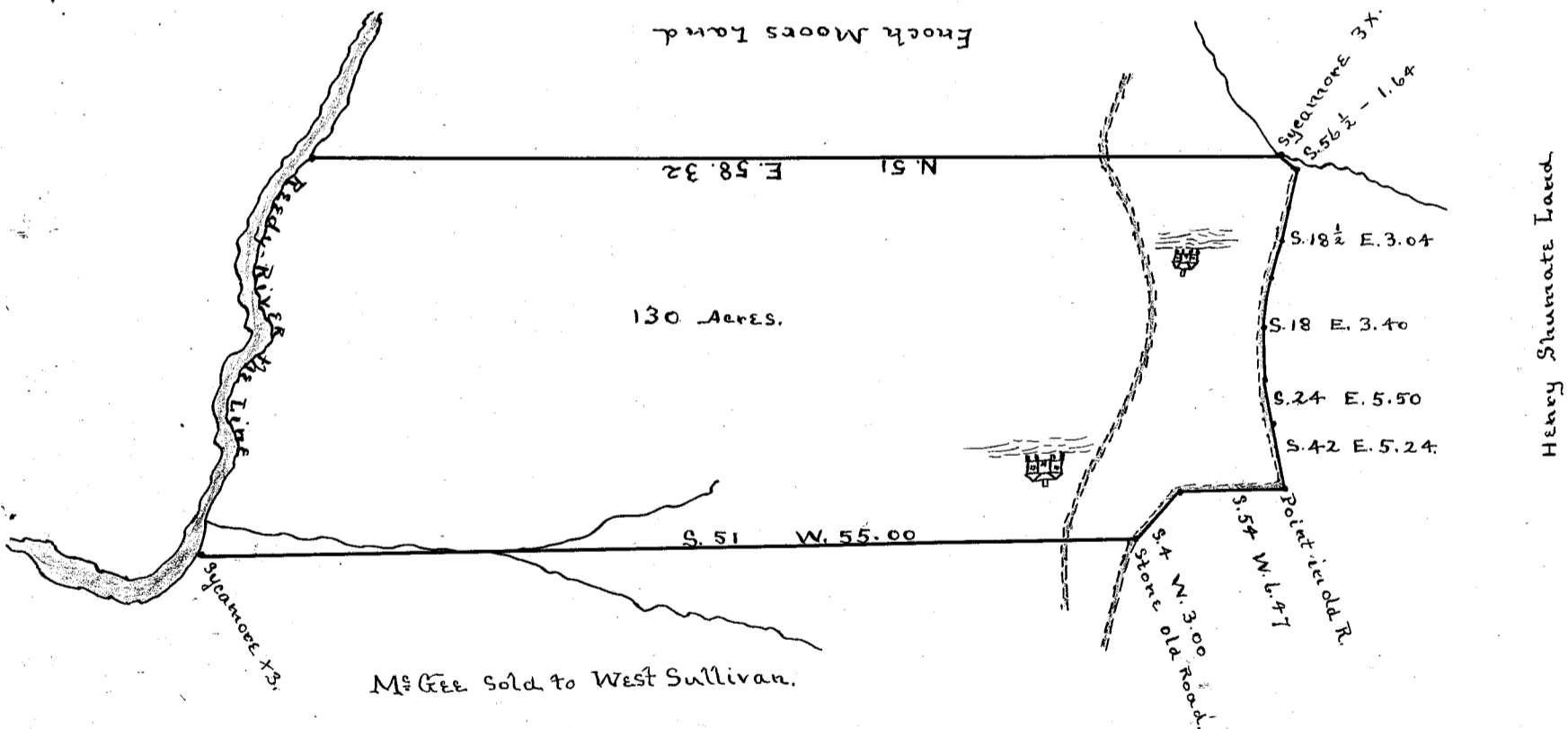


Greenville County,
South Carolina.

At the request of V.R. Jenkins, I have Surveyed and divided off from his Home Tract of land Fifty-seven and 4/10 acres, which he has sold to Wm. A. Bishop, having such lines and boundaries as the above plat represents.

James P. Willis, D.S.
November 19th, 1908.

Recorded December 11th, 1908
and Platted by J.B.--



Scale 10 chs. per Inch.

South Carolina,
Greenville County,

At the request Capt. C.A. Parkins, I have surveyed a tract of land which has been bargained to J.C. Noah, containing 130 acres, more or less, having such lines and boundaries as the above plat represents,.

Jas. P. Willis,
November the 17th, 1908.

Recorded December 19th, 1908
and Platted by J.B.---